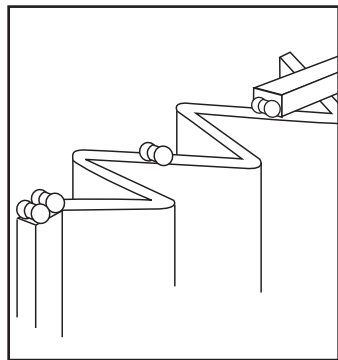


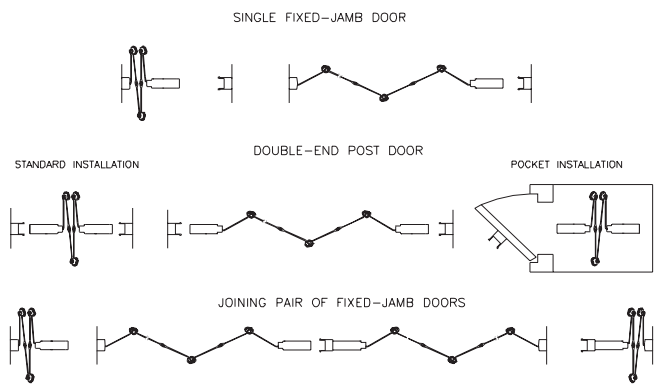
PRODUCT BRIEF



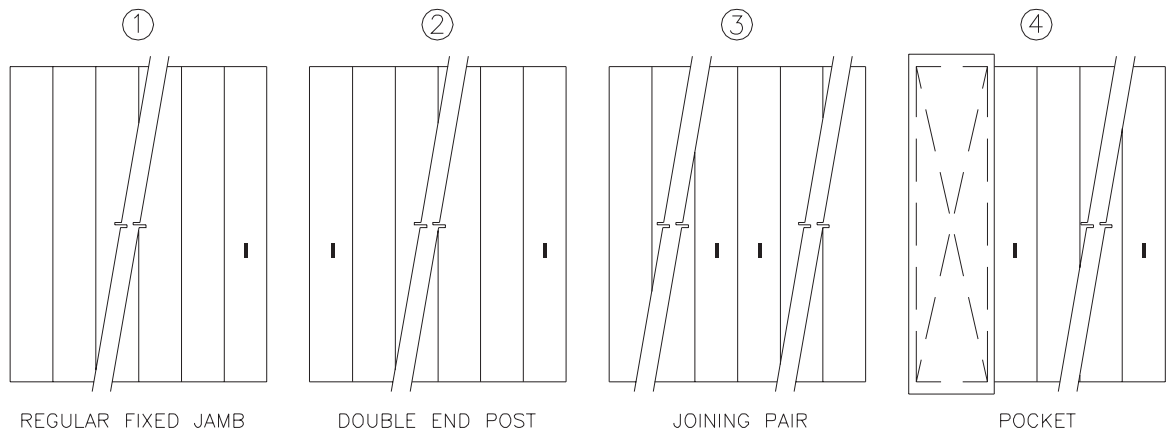
FEATURES. **Criterion**[®] features four inch wide, single wall, solid panels that are inter-connected by rigid self-mating hinges formed as an integral part of each door. Criterion is the economical rigid vinyl cover-up, designed for tight budgets, for quick installation and durability. Criterion also features aluminum track, smooth rolling nylon wheels, magnetic latches and jamb mould with concealed fasteners and manual operation. Heights to 8'1" (2464).

PANEL COLORS. Because the color is added before the panels are extruded, the color cannot wear off. The panels never need painting. Color selectors are available.

TYPES OF APPLICATIONS
 See pages 2 & 3 for details.



ELEVATIONS



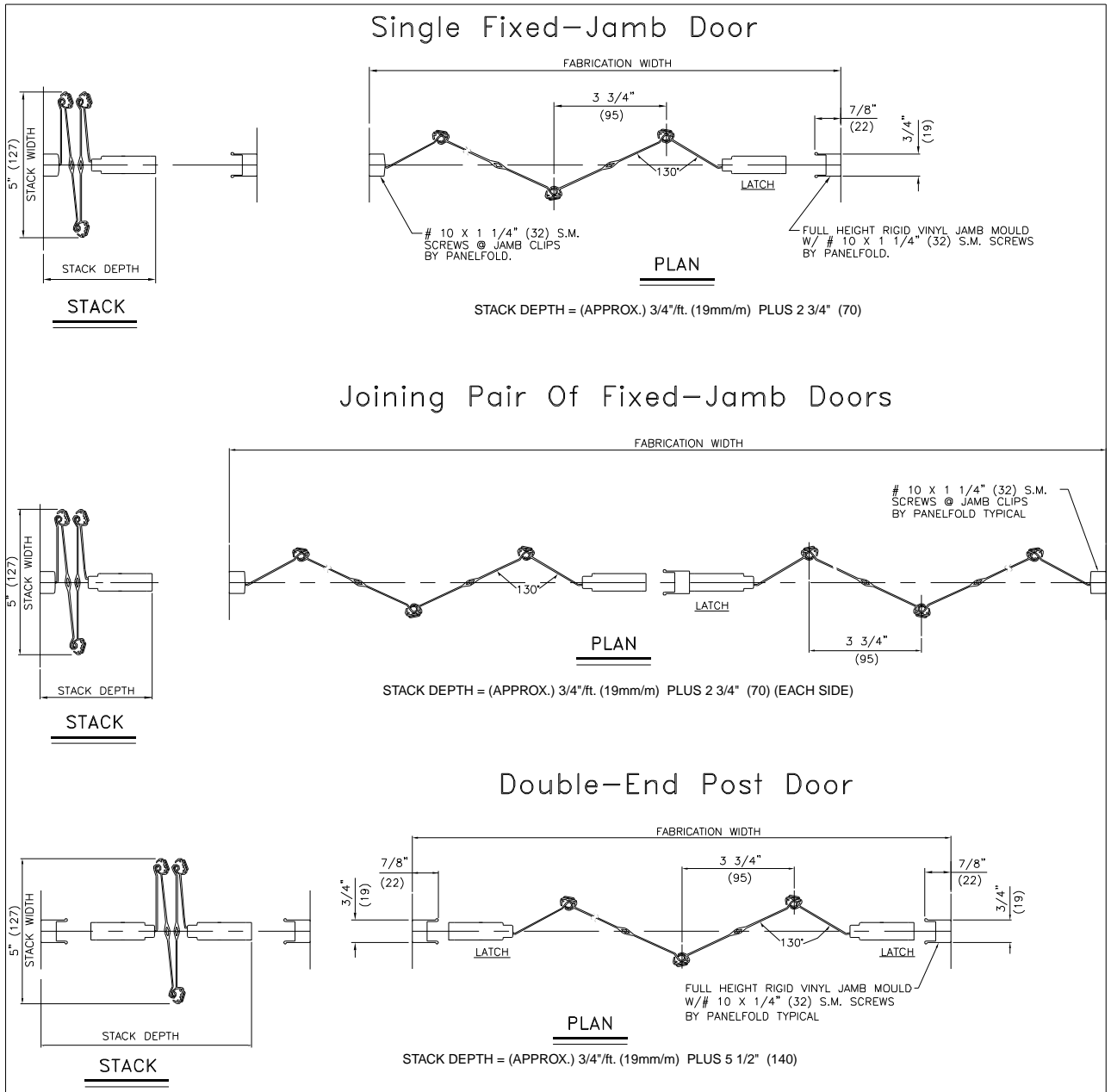
APPLICATIONS DESCRIPTIONS
 See page 4 for Product Specifications

- ① REGULAR FIXED-JAMB doors may be permanently attached at either jamb for single openings.
- ② DOUBLE END POST doors may be latched at both jambs and may be stacked at either end of the opening. Double End Post doors may be used for single openings or joining pairs. Double End Post doors can be pocket recessed.
- ③ JOINING PAIR OF FIXED-JAMB doors may be permanently attached at both jambs for single openings.
- ④ POCKET RECESSED doors may be supplied with Double End Post for single openings or for joining pairs of doors.



Criterion® Folding Doors

APPLICATIONS DETAILS

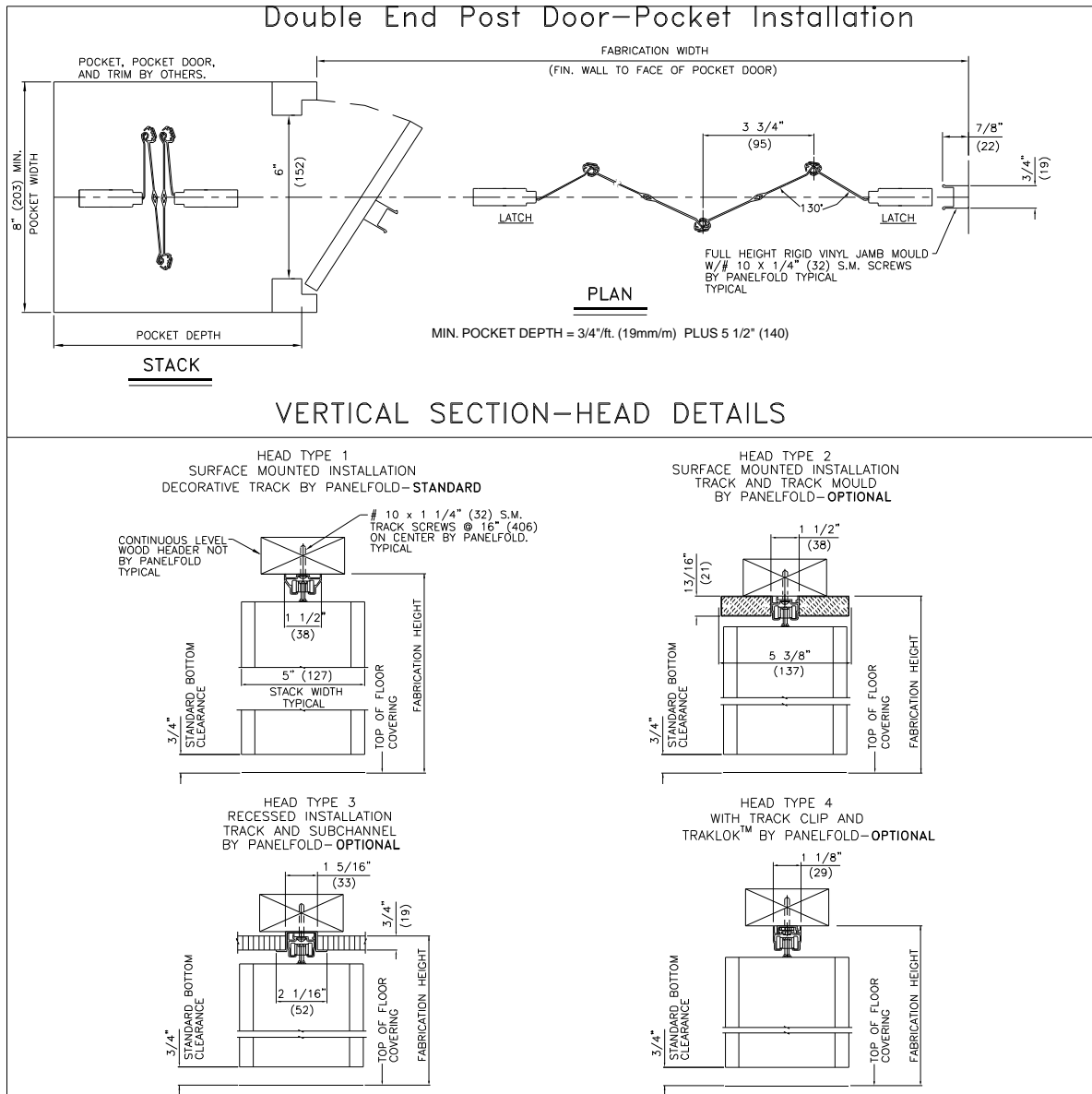


All dimensions shown in parentheses are millimeters. Scale: N.T.S.



Criterion® Folding Doors

APPLICATIONS DETAILS



All dimensions shown in parentheses are millimeters. Scale: N.T.S.

Criterion®

PRODUCT SPECIFICATIONS: SECTION 08350 - FOLDING DOORS

PART 1 GENERAL

(See Project Guide Specifications for Scope, Related Work, References, Submittals, Product Delivery and Acceptable Manufacturers paragraphs.)

PART 2 PRODUCTS

- 2.1 FOLDING DOORS** shall be manually operated wood, folding type as manufactured by Panelfold, Inc., Miami, Florida, U.S.A. and installed by an authorized representative of the manufacturer in openings prepared by others to Criterion requirements.
- 2.2 TRACK AND HANGERS:** Track shall be extruded aluminum. Hanger assemblies with two nylon wheels shall be suspended on alternate panels and on each end post.
- 2.3 PANELS** shall be 4-1/2" (114mm) wide by .040" (10mm) thick, permanently fire-resistant, extruded, rigid Polyvinyl Chloride (PVC).
- 2.4 HINGING:** Criterion panels shall be interconnected by rigid, self-mating hinges formed as an integral part of each panel running the full height of the door. Within the hinge structure, integrated, continuous, extruded PVC veins shall be incorporated for proper hinge alignment.
- 2.5 TRIM:** Doors shall be supplied with (specify: decorative track; optional plain track with track mould to conceal track; or optional plain track with extruded aluminum sub-channel for recessed track).
- 2.6 END POST:** Rigid PVC 1-3/4" (45mm) wide by 1/2" (13mm) thick, double-wall end post shall be equipped with handles and magnetic latch with nesting jamb mould and integral strike plate.

- 2.7 JAMB POST:** Centerline PVC jamb post shall snap over concealed jamb clips providing a tight attachment to the jamb. There shall be no exposed fasteners.
- 2.8 HARDWARE:** Each door shall be individually cartoned. Each carton shall contain track and all installing hardware and manufacturer's illustrated installation and service instructions.
- 2.9 STACK FORMULA:** Approximately 3/4" /ft. (62mm/m) plus 2-1/2" (64mm) for each end post.

PART 3 EXECUTION

(See Project Specifications Guide for Execution, Inspection, Preparation, Installation, Cleaning and Demonstration paragraphs.)

NOTE: The ASTM - 84 procedure Class A flame spread and other test results referenced herein are for comparison purposes only and are not intended to reflect hazards presented by this or any other materials under actual fire conditions.

For further information, or additional technical information, contact your Panelfold distributor.

Panelfold®

FOLDING DOORS • ACOUSTICAL FOLDING PARTITIONS
OPERABLE WALLS • RELOCATABLE WALLS

Panelfold, Inc. P.O. Box 680130, Miami, Florida 33168
(305) 688-3501 • FAX: (305) 688-0185