

# Rolling Security Grilles and Closures of Superior Design



Roll-Vision by MobilFlex



**MobilFlex**



Roll-126 by MobilFlex



Roll-Air by MobilFlex

[www.mobilflex.com](http://www.mobilflex.com)

SHOPPING MALLS  
BANKS • PUBLIC BUILDINGS • SCHOOLS  
AIRPORTS • OFFICES • KIOSKS • HOSPITALS • STATIONS • SHIPS  
RECEPTION DESKS • STADIUMS • WINDOW PROTECTION



### The MobilFlex Guarantee of Quality

- Most advanced Rolling closures
- Tough, maintenance-free aluminum construction
- Easy to use
- The largest selection of models
- Balanced so precisely, MobilFlex doors can be manually operated up to 18' (4.5m) wide !

### The MobilFlex Commitment to service

- On-time delivery
- Efficient after-sales service
- Professional and resourceful consultants
- R&D department for ongoing product improvement
- Cost-effective, custom-designed solutions



**Roll-Vision**  
By Mobilflex

### Roll-Vision SECURITY WITH SOPHISTICATED STYLE

The attractive **Roll-Vision** model from MobilFlex protects against theft and keeps out debris while allowing full view of what's inside. Unlike competitors' grilles, Mobilflex's unique design uses transparent polycarbonate inserts. This innovative see-through model is an excellent solution for locations requiring security and visual appeal, like high-end stores.

\*Also available, a **Roll-Flex** model with open spaces instead of polycarbonate inserts.



**Roll-99**  
By Mobilflex

### Roll-99 HIGH-RESISTANCE OPEN-AIR CLOSURE

The Mobilflex **Roll-99** is a unique alternative to traditional rolling and counter grilles. With its sturdy aluminum extrusions and continuous metal rods assembled in a checkerboard pattern, it's the ideal way to deter smash and grab theft.



### Roll-Air PROVEN SECURITY, CUTTING-EDGE DESIGN

Looking for a grille that provides excellent visibility, air flow, and security? Specify the Mobilflex **Roll-Air**, featuring 50% perforated steel slats covered with high resistance powder coat paint. It's at home in high-end storefronts and any location with a contemporary architectural vibe.



**Roll-126**  
By Mobilflex

### Roll-126 INNOVATIVE AND ECONOMICAL

Each maximum security Mobilflex **Roll-126** grille is reinforced with aluminum-tube rods that provide protection against break-ins without restricting air flow or visibility. It's the logical choice for storefronts, display windows, airports, stadiums, and more.



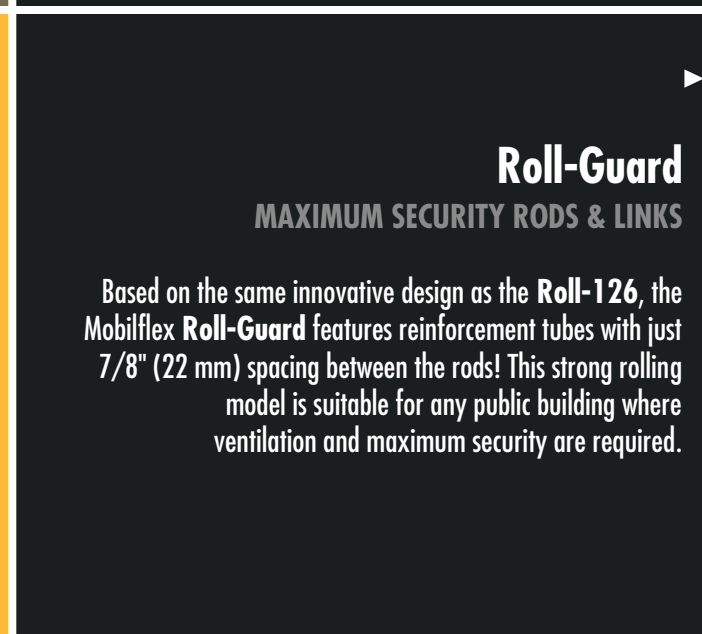
**Roll-126**  
By Mobilflex



**Roll-Shutter**  
By Mobilflex

### Roll-Shutter PRIVACY & SECURITY

For maximum security and total protection, Mobilflex's **Roll-Shutter** offers an attractive alternative to metal rolling doors. With its nearly hermetic closure, it's ideal for service counters, concession stands, airports, and merchandise warehousing areas.



### Roll-Guard MAXIMUM SECURITY RODS & LINKS

Based on the same innovative design as the **Roll-126**, the Mobilflex **Roll-Guard** features reinforcement tubes with just 7/8" (22 mm) spacing between the rods! This strong rolling model is suitable for any public building where ventilation and maximum security are required.



**Roll-Guard**  
By Mobilflex



# Counter Shutter

## ATTRACTIVE SOLUTION FOR SMALL OPENINGS

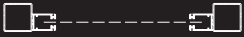
The MobilFlex Counter Shutter features attractive slimmed-down components that won't cramp your display room. Solid aluminum slats enhance any interior, making it the perfect solution for service counters, booths, ticket windows, and kiosks.

# Counter Shutter

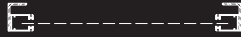
By Mobilflex

### SUPPORT POSSIBILITIES:

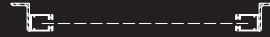
- BETWEEN 3"x3" (76x76mm) OR 4"x4" (102x102mm) STEEL TUBES



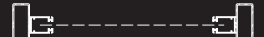
- BETWEEN IN OR OUT 2"x3" (51x76mm) STEEL ANGLES



- BETWEEN IN OR OUT 2"x3" (51x76mm) ALUM. ANGLES



- BETWEEN 1 3/4"x4" (44x102mm) ALUM. TUBES

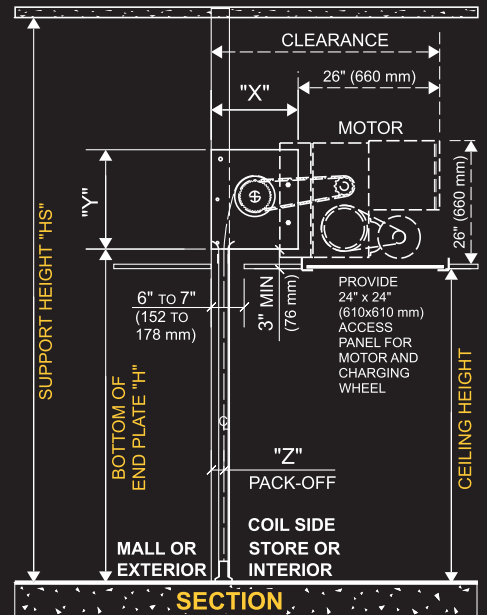
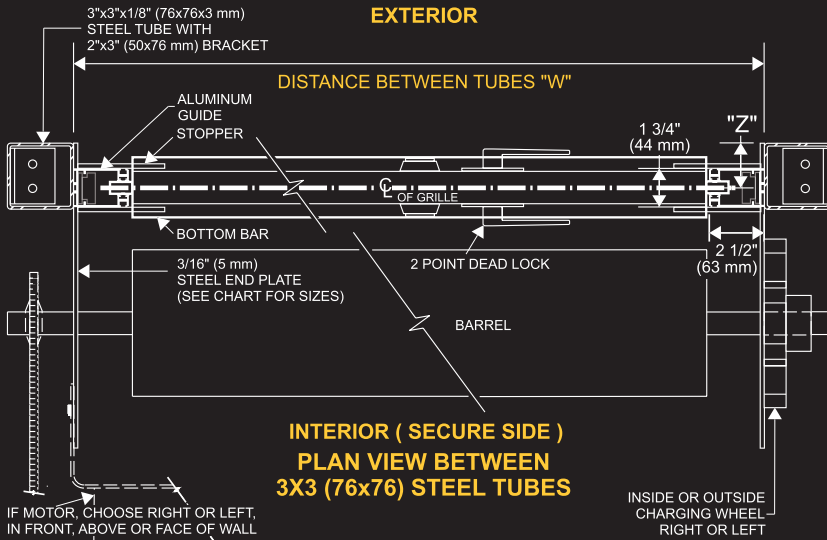


### OPERATION:

- MANUAL OPERATION WITH PULL ROD
- MOTORIZED OPERATION WITH BUILT-IN INTERLOCK STOP AND EMERGENCY RELEASE WITH PRESS BUTTONS OR KEY SWITCH
- HAND CRANK OPERATION
- CHAIN DRIVE AVAILABLE (BUT NOT RECOMMENDED)

### HOOD:

- FACIA (1 SIDE)
  - END CAP
  - 2 SIDES
  - 3 SIDES
  - 4 SIDES
- CLEAR ANODIZED .032" (0,8mm) ALUMINUM SHEET



For more details or a FREE evaluation, please contact one of our specialists.



Manufacturer of Folding Grilles and Closures

**QUEBEC & MARITIMES**  
1175, Ch. Industriel  
Saint-Nicolas (Québec)  
Canada G7A 1B2  
Tel.: 1(418) 831-6652  
Fax: 1(418) 831-7817  
Tel.: (800) 501-FLEX (3539)  
Fax: (800) 470-FLEX (3539)

**ONTARIO**  
605-58 Marine Parade Drive  
Toronto Ontario  
Canada M8V 4G1  
Tel.: (905) 569-FLEX (3539)  
Fax: (905) 569-3272  
Tel.: (800) 811-FLEX (3539)  
Fax: (800) 387-FLEX (3539)

**WESTERN CANADA**  
Vancouver  
British Columbia  
Calgary, Edmonton  
Alberta  
Tel.: (800) 796-FLEX (3539)  
Fax: (800) 852-FLEX (3539)

**UNITED STATES**  
1711 Cudaback Avenue  
Suite 688, Niagara Falls  
New York 14303  
USA  
Tel.: (800) 216-FLEX (3539)  
Fax: (800) 254-FLEX (3539)

**ENGLAND**  
9 Woburn St.  
Amphill, Bedfordshire,  
England  
MK 45 2HP  
Tel.: (01525) 841 100  
Fax: (01525) 405 561



CEILING HEIGHT		END PLATE	PACK-OFF
OPEN STYLE	FULL PANELS	"X" x "Y"	"Z"
UP TO	UP TO	12" x 12"	2"
7'0" (2,13m)	13'0" (3,96m)	(305x305mm)	(51mm)
7'1" (2,16m)	13'1" (3,99m)	14" x 16"	2 1/4"
TO	TO	(355x406mm)	(57mm)
10'0" (3,05m)	18'0" (5,49m)		
10'1" (3,07m)	18'1" (5,51m)	16" x 18"	2 1/2"
TO	TO	(406x457mm)	(63mm)
15'0" (4,57m)	20'0" (6,10m)		

Web Site : [www.mobilflex.com](http://www.mobilflex.com) • E-mail: [flex@mobilflex.com](mailto:flex@mobilflex.com)