

Startex™



WHITE



CREAM



BISQUE

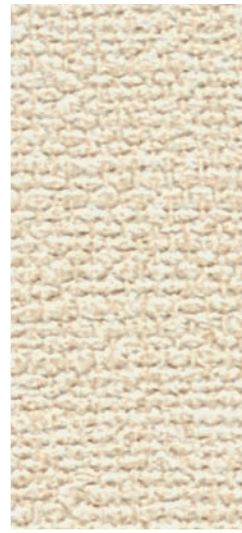


LONDON WHITE

Hightex™



COFFEE CREAM



WHITE RICE



BEACH



STONE

Woodtex®

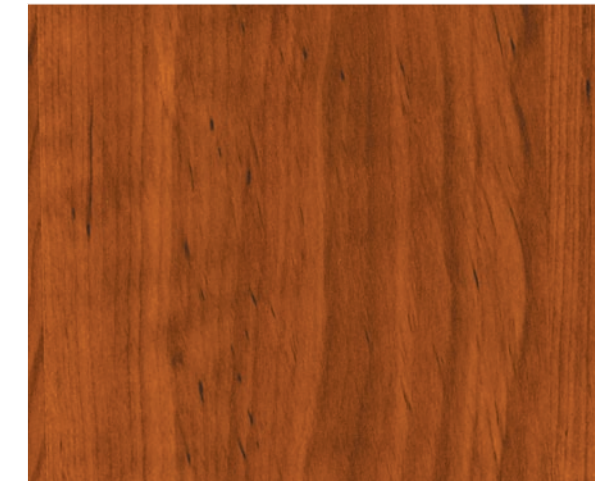


WHEATWOOD™



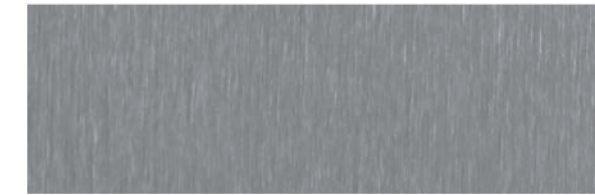
HONEYWOOD™

Woodtex® PREMIUM



SORRELWOOD™

Lustertex™



BRUSHED ALUMINUM

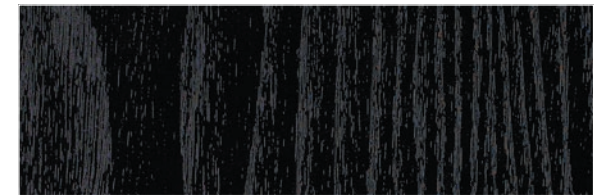
from Panelfold®



CANYONWOOD™



SABLEWOOD™



EBONY ASH



GLACIERWOOD™



SILKWOOD™



BRUSHED PEWTER

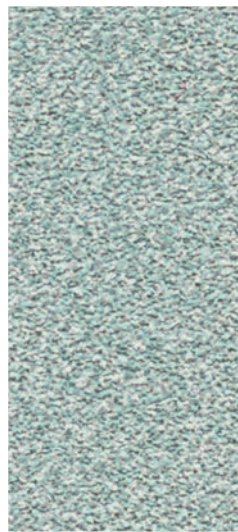
Sandtex™



OYSTER



GREIGE



MINT



EARLY SKY

Ropetex®



SNOWDRIFT



FROSTY



FRENCH BEIGE



PUMICE

FabRICTEX®



DOVER



PEARL



NUTMEG



GREY FLANNEL

Meritex™



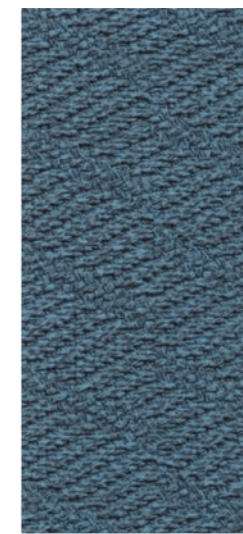
CREAM OF WHEAT



SANDSTONE



ALMOND



INDIGO

SCOPE

Panelfold's **Vinyltex™** vinyl color selections are an attractive, durable and economical design solution available on Panelfold product models as indicated below:

	Scale®	Sonicwal®	Fabricwal®	Moduflex®	PrimeSpacer®
Startex					
FILM	●	●			
TYPE I				●	●
TYPE II			●	▲	▲
Sandtex					
TYPE I	▲	▲		●	●
TYPE II			●	▲	▲
Fabrictex					
TYPE I	▲	▲		●	●
TYPE II			●	▲	▲
Hightex					
TYPE I	▲	▲		●	●
TYPE II			●	▲	▲
Ropetex					
TYPE I	▲	▲		●	●
TYPE II			●	▲	▲
Meritex					
TYPE I	▲	▲		●	●
TYPE II			●	▲	▲
Woodtex					
FILM	▲	▲	N/A	Series 400/600 Only ▲	▲
Lustertex					
FILM	▲	▲	N/A	Series 400/600 Only ▲	▲

● Standard ▲ Upgrade

FIRE RESISTANCE

All Panelfold vinyl surfaces have been tested for Class A fire hazard classification in accordance with ASTM E-84 Tunnel Test Method (Surface Burning Characteristics of Building Materials).

	FILM	TYPE I	TYPE II
Flame Spread	10	10	5 or 10
Smoke Density	0 or 15	25	5

NOTE: The numerical flame spread rating and other test results referenced herein are not intended to reflect hazards presented by this or any other materials under actual fire conditions.

PERFORMANCE

Panelfold vinyls have low static properties, are non-allergenic, and will not mildew, rot or support the growth of bacteria.

MAINTENANCE

Panelfold vinyls are easy to clean. Use traditional cleaning methods: i.e. washing, wiping, brushing, vacuuming. For water based stains use water based cleaning agents. For oil based stains use solvent cleaner.

Vinyltex™

STANDARD VINYL COLOR SELECTIONS

from
Panelfold®

Panelfold®

OPERABLE PARTITIONS • ACCORDION PARTITIONS
PORTABLE PANEL PARTITIONS • ACOUSTICAL PANELS • FOLDING DOORS

Panelfold, Inc. PO Box 680130 Miami, Florida 33168 • Phone: 305-688-3501 • FAX: 305-688-0185
E-Mail: sales@panelfold.com • Internet: www.panelfold.com

See our other selectors for additional textured vinyls, wood veneers, high pressure plastic laminates, vertical rib wall carpeting and woven fabrics available for use on these and other Panelfold Space Division Products.